

## KEY OPPORTUNITIES FOR INNOVATIVE SMES WORKSHOP

You are a R&DI performing SME interested in the opportunities offered by European programs?

You want to develop a R&DI project but the thematic calls do not match your idea and/or you would prefer to work in a small tailor-made consortium?

OR

You are an innovative company willing to fuel its growth and expansion through a sounded business strategy for its innovative products or services?

**Innoviris**, **NCP Brussels** and **Enterprise Europe Brussels** invite Brussels-based companies to learn more about 2 sets of opportunities to :

- Carry out R&DI activities with the support of European funding schemes (“bottom-up” Research and Innovation, i.e. calls for proposals not limited to specific fields or areas of work).
- Boost the business development of innovative products or services keeping the market perspective in strategy design.

### Topics

European supporting schemes, particularly relevant for Brussels innovative SMEs in all sectors and themes.

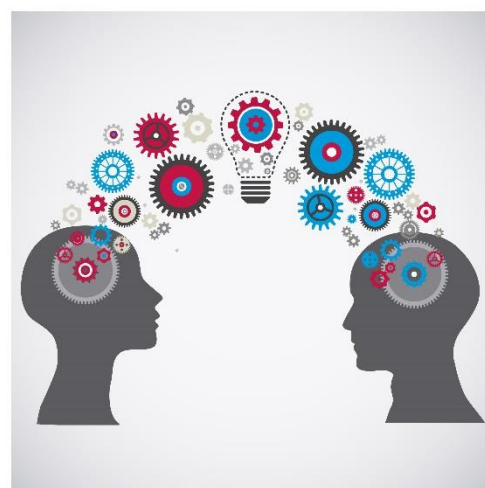
### Objectives

- Get an overview of supporting opportunities particularly relevant for innovative SMEs and for R&DI SMEs.
- Understand the ratio, the purposes and the targeted audience of each supporting scheme.
- Understand differences among EU funding programs for R&DI activities and choose the right one for your idea.
- Meet advisors who can help you further in stepping in the most suitable approach.

### Target

Brussels-based small and medium enterprises with innovative project ideas or business plan.

*This workshop is not targeted at consultants.*



### DATE

Thursday 11 February 2016  
From 13:00 to 17:00

### VENUE

impulse.brussels  
@ UNO.brussels  
Chaussée de Charleroi 110  
1060 Brussels

### REGISTRATION

Deadline: 9 February 2016  
Send an email to Michele Kaisin  
[mka@impulse.brussels](mailto:mka@impulse.brussels)

## DRAFT AGENDA

**13:00 - Registration & Welcome**

**1st Set of Opportunities - EU R&DI Funding and Prizes**

**13:30 - Horizon 2020 Fast-Track-to-Innovation Pilot and Prizes** - *by Tania Van Loon, NCP Coordinator at impulse*

**13:50 - Eureka Eurostars2 programme** - *by Mathilde Reumaux, International Projects Advisor at Innoviris*

## **2nd Set of Opportunities – Business Development**

**14:10 - SME Instrument** - *by Tania Van Loon, NCP Coordinator at impulse*

**14:20 - Differences and complementarities between these sets-** *by Tania Van Loon, NCP Coordinator at impulse & Mathilde Reumaux, International Projects Advisor at Innoviris*

**14:40 - Coffee break**

**15:00 - Free-of-charge support available to Brussels SMEs for successful project funding:**

- **NPC Brussels** - *by Tania Van Loon, NCP Coordinator at impulse*
- **Innoviris** - *by Mathilde Reumaux, International Projects Advisor at Innoviris*
- **Enterprise Europe Brussels** - *by Barbara Andreani, Enterprise Europe Brussels Manager at impulse*

**15:40 - Interactive session with representatives of EASME and the Eureka Secretariat: tips & tricks, insider's view, Q/A**

**17:00 - Closing**

impulse.brussels - [www.abe-bao.be](http://www.abe-bao.be)

Innoviris - [www.innoviris.be](http://www.innoviris.be)

NCP Brussels - [www.ncpbrussels.be](http://www.ncpbrussels.be)

Enterprise Europe Brussels - [www.brusselsnetwork.be](http://www.brusselsnetwork.be)

be innovative  
be .brussels 