



# Pitching session & Matchmaking

Mathilde Reumaux- Scientific Advisor Innoviris



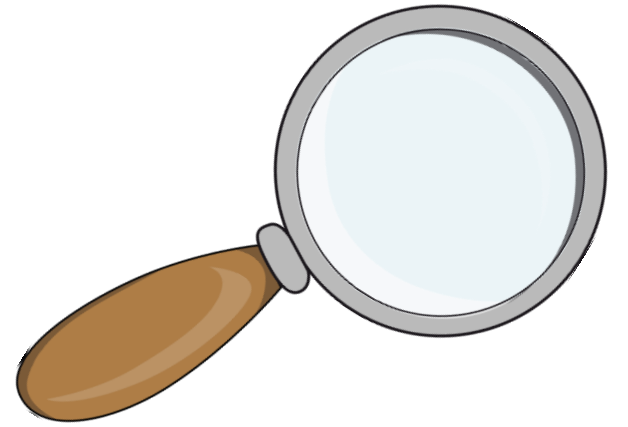


team<sup>UP</sup>

ACADEMIC RESEARCH & INDUSTRY



innoviris.brussels   
empowering research





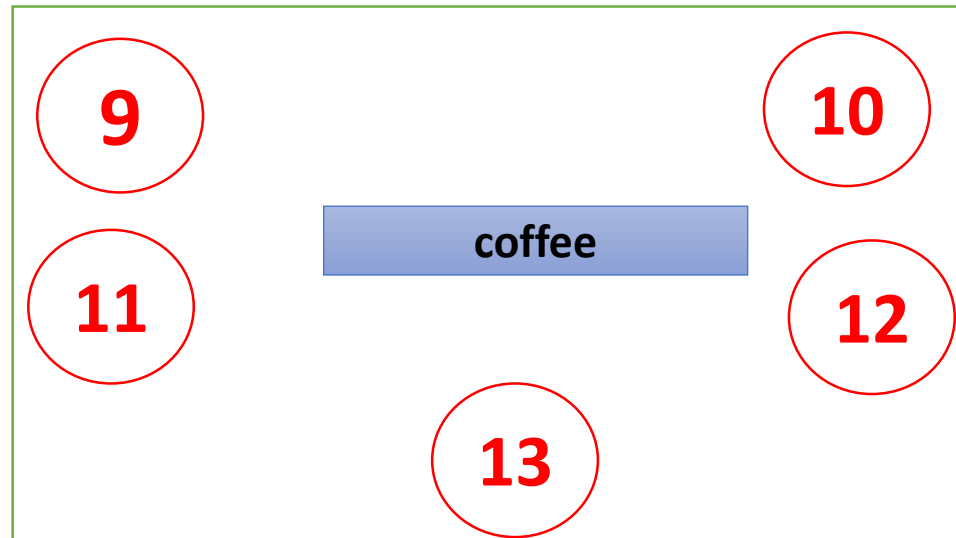
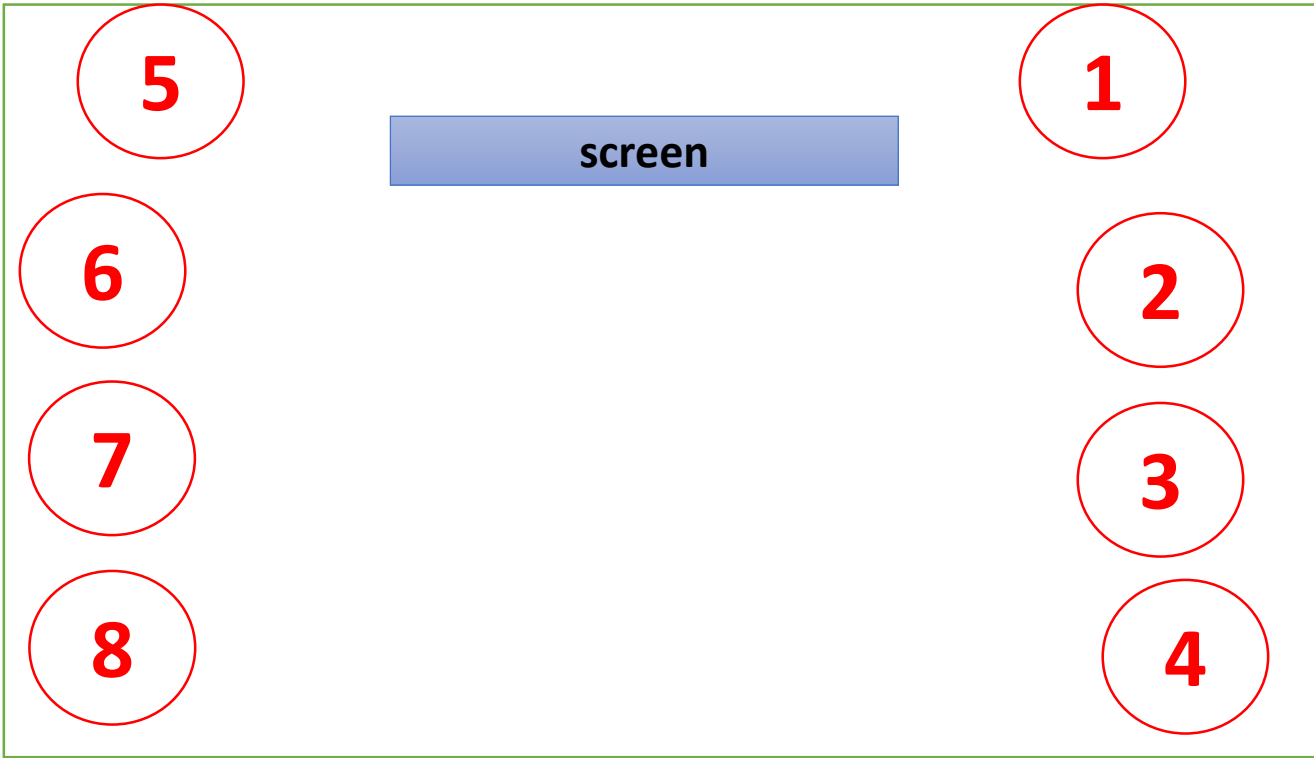
Research organisations  
Universities / Higher education institutes



Companies



Others





# ARTIFICIAL INTELLIGENCE LAB

Ann Nowé

Johan Loeckx

- . (Deep) Reinforcement learning
- . Natural Language Understanding
- . Multi-agent modelling and prediction
- . Cognitive Recommender Systems

# NIXXIS

Luc Jacobs

[www.nixxis.com](http://www.nixxis.com)



# Mentis

Mohamed Ben Haddou

<http://www.mentis-consulting.be>





# Sagacity

Kevin Françoisse

[www.sagacity.com](http://www.sagacity.com)



# Akka Technologies

Luc Dananchy  
Pedro Faria

<https://www.akka-technologies.com>



# Meetup Artificial Intelligence Brussels

Pedro Faria

<https://www.meetup.com/Artificial-Intelligence-Brussels/>



# apptweak

Alexandre Mathieu

<https://www.apptweak.com/>



**apptweak**

# Edebex

Xavier Corman

<http://www.edebex.com>



# Forespell

Kasper Van Lombeek

<http://www.forespell.com>



# Infobel

Marc Wahba

<http://www.infobel.com>



# Bluesquare.org

Nicolas de Borman

[www.bluesquare.org](http://www.bluesquare.org)

**BLUE  
SQUARE  
■ ORG**



# Belga

Tom Wuytack

<http://www.belga.be>

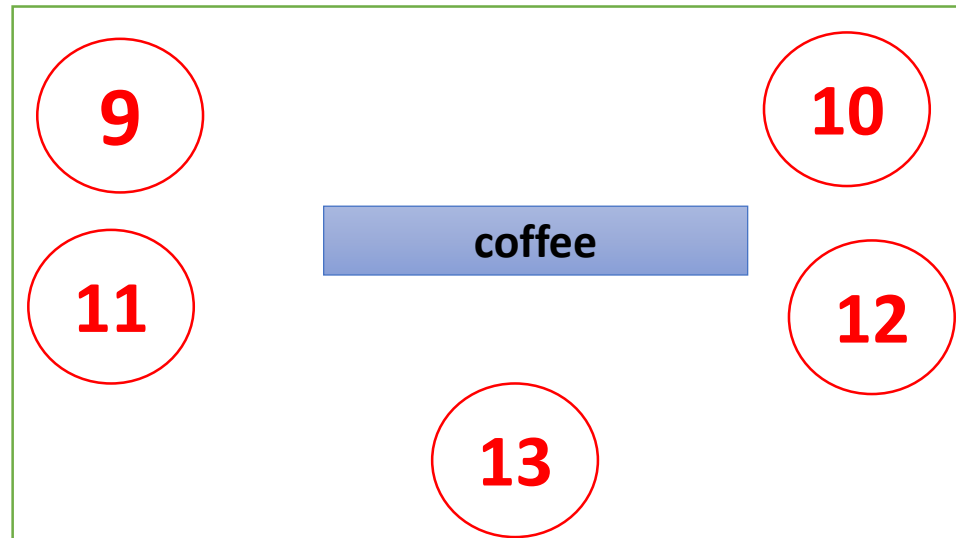
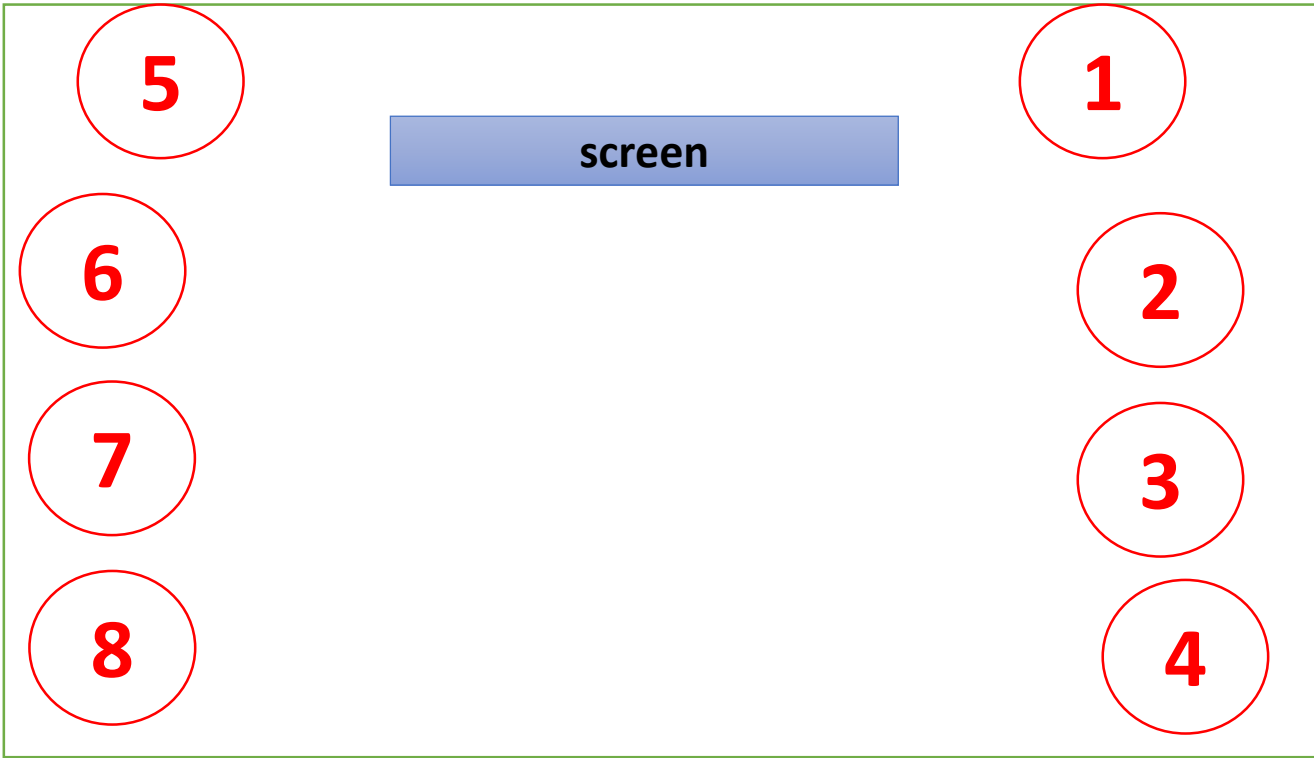


# The Biotech Quality Group

Yvan Gouttebelle

[www.thebiotechqualitygroup.com](http://www.thebiotechqualitygroup.com)





# Follow & reach us



[www.innoviris.brussels](http://www.innoviris.brussels)



[www.twitter.com/innoviris](http://www.twitter.com/innoviris)  
@Innoviris



[www.linkedin.com/company/innoviris](http://www.linkedin.com/company/innoviris)



+32 2 600 50 36



info@innoviris.be

